

Graphical abstract I

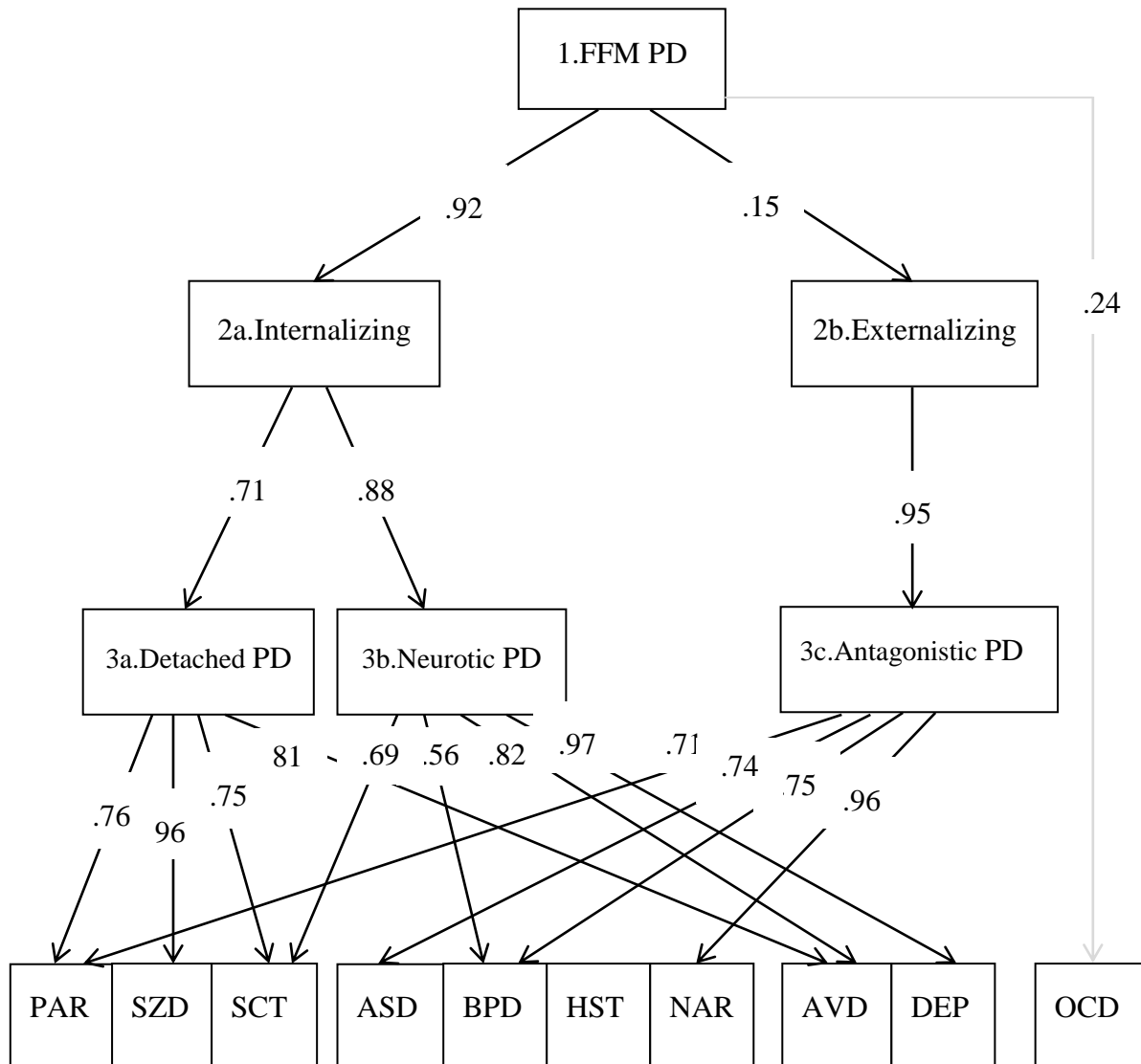


Figure 1. Structural hierarchy of the 10 DSM personality disorders and correlations with higher order factors, based on the FFM-count method. PAR = Paranoid, SZD = Schizoid, SCT = Schizotypal, APD = Antisocial, BPD = Borderline, HST = Histrionic, NAR =Narcissistic, AVD = Avoidant, DEP = Dependent, OCD = Obsessive-compulsive

Graphical abstract II

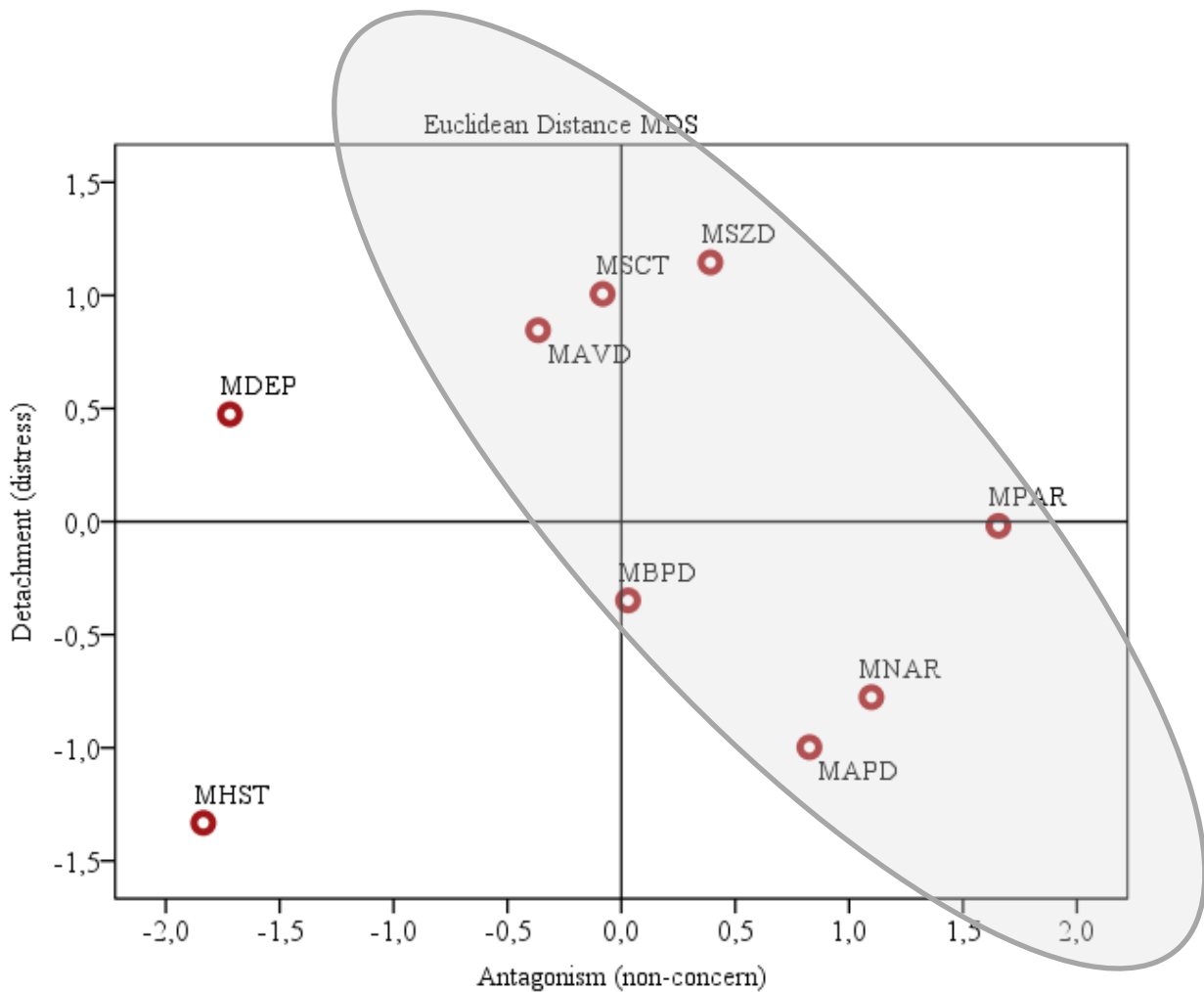


Figure 2. Multidimensional scaling (MDS) using ASCAL based on Euclidian distances, depicting the proximities between specific PDs along two underlying dimensions. The grey elliptical area is the study's suggestion for how to conceptualize PD: High antagonism characterized by empathic non-concern (upper end of X-axis), and detachment characterized by the presence or absence of personal distress (along Y-axis). MPAR = Paranoid, MSZD = Schizoid, MSCT = Schizotypal, MAPD = Antisocial, MBPD = Borderline, MHST = Histrionic, MNAR = Narcissistic, MAVD = Avoidant, MDEP = Dependent PD.